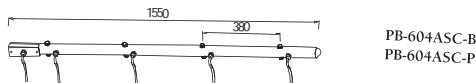
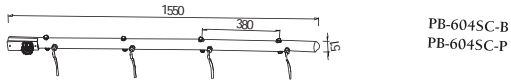
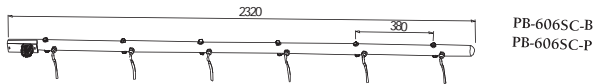
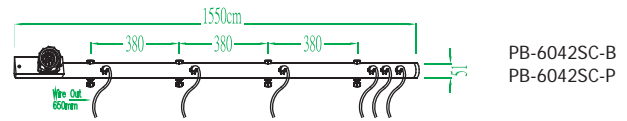
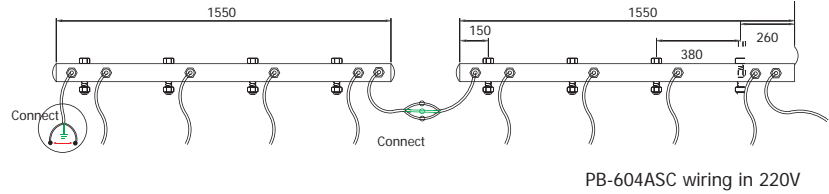
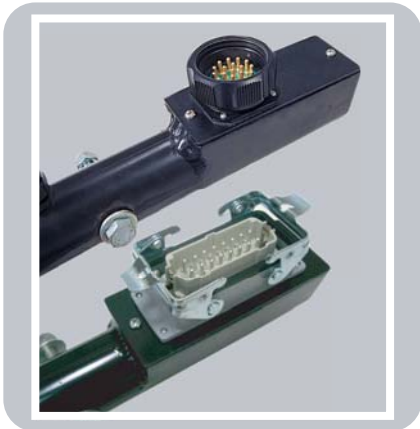


# LIGHTING BAR

## PARBAR

All KUPO lighting bars are manufactured from 51mm x 3.8mm (T) aluminum tube with a cast aluminum box. It comes with 65cm 3C x 1.5mmsq (16AWG) silicon cable and multi connection. The following is our range of light bars, other variations of lighting bars are available upon request.



Cat. No.	Description
PB-606SC-B/P	6 circuits wired from 19 Pin chassis connector to 6 x 65cm tails black / polish
PB-604SC-B/P	4 circuits wired from 19 Pin chassis connector to 4 x 65cm tails black / polish
PB-604ASC-B/P	Aerobar series wired from input to 4 x 65cm black / polish
PB-6062SC-B/P	6 circuits wired from 19 Pin male to 19 Pin female chassis connector to 6 x 65cm tails black / polish
PB-606HC-B/P	6 circuits wired from 16 Pin male chassis connector to 6 x 65cm tails black / polish
PB-604HC-B/P	4 circuits wired from 10 Pin male chassis connector to 4 x 65cm tails black / polish
PB-6042SC-B/P	4 circuits wired from 19 Pin chassis connector to 4 x 65cm tail with 2 more circuits at bar end black / polish