

**482 2 SECTIONS WIND UP STAND**

**CHROME PLATED STEEL STAND WITH GEARED COLUMN**

Elevation: 2.2mm per handle turn,  
2 Sections, Dia.: 55, 45mm, 1 Riser, Leg Dia.  
30mm, One leveling leg

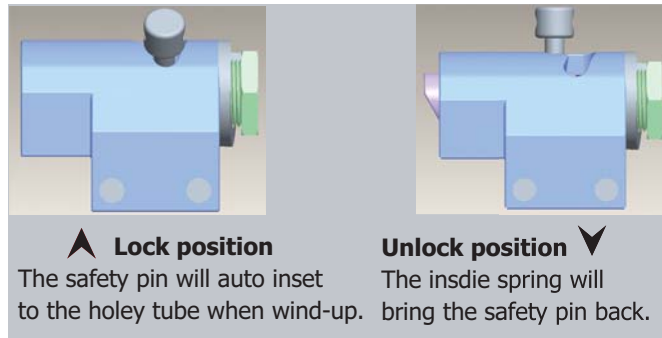
 165cm	 245cm	 18.5KG
 128m	 45KG	 28mm

**481 2 SECTION WIND UP MIGHTY STAND**

**CHROME PLATED STEEL STAND WITH GEARED COLUMN**

Elevation: 2.2mm per handle turn,  
2 Sections, Dia.: 55, 45mm  
1 Riser, Leg Dia. 30mm, One leveling leg,  
with auto-lock

 110cm	 145cm	 13.5KG
 110cm	 40KG	 28mm



**OPTIONAL ACCESSORIES**  
**KC-100 CASTER**  
Dia. 80mm w/breakers Set for three



**KS-056 LANTERN BAR**  
6 x lantern T Bar  
1420mm long with; Dia. 28mm stud