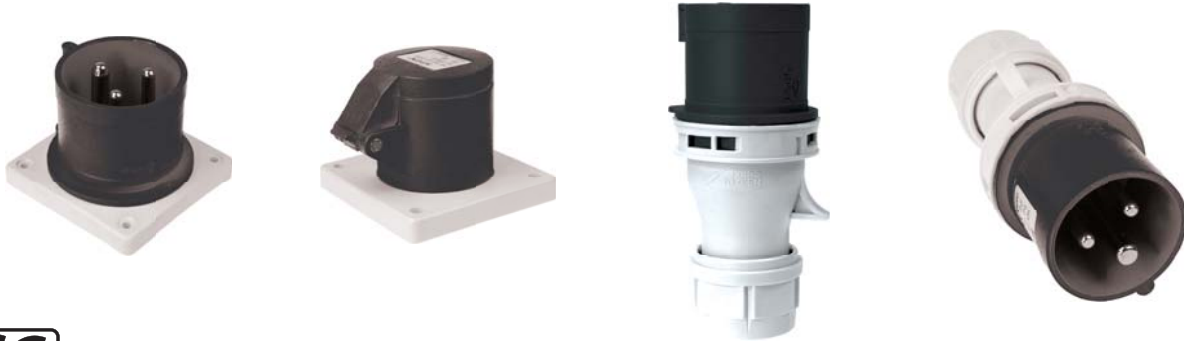


POWER CONNECTOR

The professional power connectors have spring fastening structure to guarantee ultralow contact resistance in connection; different plug & socket has different position, diameter and extreme value to avoid incorrect connection. It has excellent electric insulation IP44 performance, high di-electric strength, anti-corrosive and good shock resistance. It can work stably in low and high-temperature indoor or outdoor environment. Moreover, it is widely applied to factor power distribution system, machinery, building site, stage, equipment etc.



CEE FORM CONNECTOR

Cat. No.	AMP	PIN	DESCRIPTION	VOLTAGE
231	16	3	cable male	230V
281	32	3	cable male	230V
2601	16	3	cable female	230V
2801	32	3	cable female	230V
5601	16	3	socket female	230V

SCHUKO CONNECTOR

Cat. No.	AMP	PIN	DESCRIPTION	VOLTAGE
131	16	3	cable male	230V
1601	16	3	socket female	230V



HBL SERIES 400AMP LINE CONNECTOR

COLOR	MALE PLUG	FEMALE PLUG
BLACK	HBL400MBK	HBL400FBK
RED	HBL400MR	HBL400FR
GREEN	HBL400MGN	HBL400FGN
WHITE	HBL400MW	HBL400FW
BLUE	HBL400MBL	HBL400FBL

(compatilbe with major brands of power connectors)



HBL SERIES 400AMP PANEL

COLOR	MALE RECEPTACLE	FEMALE RECEPTACLE
BLACK	HBLMRSBK	HBLFRSBK
RED	HBLMRSR	HBLFRSR
GREEN	HBLMRSGN	HBLFRSGN
WHITE	HBLMRSW	HBLFRSW
BLUE	HBLMRSBL	HBLFRSBL

(compatilbe with major brands of power connectors)