

# DMX LIGHTING BAR

## TO CONNECT LED FIXTURES

### SPECIFICATION

- Dia. 51mm aluminum alloy tube with ABS-injected versatile socket.
- 20A power connector for main input and output.
- 3-pin or 5-pin female XLR for DMX in and thru connection.
- Schuko or CEE female mounted on versatile socket.
- 4-outlet and 6-outlet version available.
- Variations available upon request !

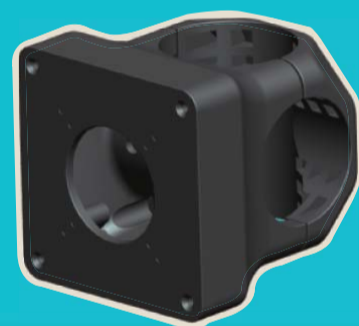


**LIGHTING BAR**  
fabricated with  
power & signal  
connector



### VERSATILE SOCKET

feasible for 16A  
CEE, Schuko and  
BS546



# VERSATILE SOCKET

LED PAR64 with DMX  
Lighting Bar. Perfect Match!



# KUPO®